

JANUARY-FEBRUARY 2024

www.thelandscapeexpo.com

vol.27 - no.01

LANDSCAPE CONTRACTOR

TURF UNDER ATTACK
NEW EQUIPMENT FOR 2024
HERBICIDES AND INSECTICIDES
PLUS
GPS TRACKING
LANDSCAPE CONTRACTOR LICENSE LAWS



THE 2024 - ANAHEIM

LANDSCAPE

DESIGN • BUILD • MAINTAIN • SUPPLY

SEPTEMBER 18TH & 19TH

EXPO

THE FUTURE OF LANDSCAPE
BUILDING INDUSTRY INDICATORS
PEST CONTROL SEMINARS



ABOUT THE COVER:
IT SEEMS ALL FORMS OF TURF ARE UNDER ATTACK, FROM ARTIFICIAL TO NON ESSENTIAL TURF THROUGHOUT THE WEST.



features

- 4** New Equipment for 2024
- 8** GPS Tracking Solutions
by John Lam, TopFleet GPS
- 10** The Uncertain Future of Artificial Turf in California
by Brandon Burgess, Chino Basin Water Conservation
- 18** Herbicides and Insecticides

news

- 11** PFAS Harmful Impact
- 14** CLCA Honors Leaders with Distinguished Awards
- 14** 2024 Legislation Impacting California Contractor's Licensees
- 14** Turf Legislation Across the West
- 15** EPA Refines Pesticide Policies Under the Endangered Species Act
- 15** PAPA's Recommendation on Reporting Pesticide Related Incidents
- 16** Housing Construction and Economic Outlook
- 16** Home Builder Key Problems
- 17** Upcoming Events
- 17** Irrigation Association Reports Concerns Over the Corporate Transparency Act
- 19** Keeping Up With Pest Control
- 20** LC/DBM Vendor Marketplace

Find LC/DBM advertisers and thousands of additional products and vendors at **LADetails.com**



Publisher/Editor-in-Chief
George Schmok
gschmok@landscapearchitect.com

Associate Publisher
Nathan Schmok
nschmok@landscapearchitect.com

Managing Editor
Aaron Schmok
aschmok@landscapearchitect.com

Assistant Editor
Rebecca Radtke
rradtke@landscapearchitect.com

Administrative Assistant
Karime Bennett
kbennett@landscapearchitect.com

Art Director/Ad Coordinator
Jeremy Victor
jvictor@landscapearchitect.com

Graphic Designer
Paul Rosales
prosales@landscapearchitect.com

IT Technician & Web
Jerry Short
jshort@landscapearchitect.com

Data Development Manager
Calvin Scott
cscott@landscapearchitect.com

Data Management Lead
Francisco Alvarez
falvarez@landscapearchitect.com

Data Management
Erin McCarthy
emccarthy@landscapearchitect.com

Advertising & Trade Show Sales
Clint Phipps
cphipps@landscapearchitect.com
714-979-LASN (5276) x114

Nathan Schmok
nschmok@landscapearchitect.com
714-979-LASN (5276) x111

Office Manager
Cynthia McCarthy
cmccarthy@landscapearchitect.com

Landscape Communications, Inc
14771 Plaza Drive, Suite A
Tustin, CA 92780
714-979-5276

Romans 13:8 ... Let no debt remain outstanding, except the continuing debt to love one another, for whoever loves others has fulfilled the law.

- Landscape Contractor Design Build Maintain and/or the publisher is a member of or financially supports the following associations:
- American Society of Landscape Architects
 - National Recreation and Parks Association
 - International Dark Sky Association
 - International Association of Lighting Designers
 - Irrigation Association
 - Association of Professional Landscape Designers
 - National Parks Conservation Association
 - Turf Producers International
 - National Trust for Historic Preservation
 - International Erosion Control Association
 - International Society of Arboriculture
 - Landscape Architecture Foundation
 - CLASS Fund
 - National Wildlife Federation
 - Sierra Club
 - Arbor Day Foundation
 - Smithsonian
 - The Nature Conservancy

Find Us Online:
[@LandscapeContractor](https://www.instagram.com/LandscapeContractor/) / Design, Build, Maintain [f](https://www.facebook.com/LCDBMMagazine) @LCDBMMagazine
[f](https://www.facebook.com/TheLandscapeExpoAnaheim) @TheLandscapeExpoAnaheim [i](https://www.instagram.com/thelandscapeexpo) @thelandscapeexpo

COMMERCIAL GRADE. ALL DAY POWER.



NOW WITH **25% MORE MOWING POWER!**

We invented All Day Power and are 100% focused on electric mowing. Only Mean Green has over a decade of real-world **PROVEN** results!



Durable



Reliable



Noise Reduction



Operational Savings



Zero Emissions



Cut Quality



◀ **SCAN CODE TO
SCHEDULE YOUR
FREE DEMO!**



★ **USA**
ENGINEERED AND BUILT

Assembled in the USA
using domestic and
foreign parts.

Find a Dealer at: [MeanGreenProducts.com](https://www.MeanGreenProducts.com)

New Equipment for 2024

Here are a few pieces of new and featured equipment from select suppliers throughout the west. Next issue of Landscape Contractor magazine will feature the newest innovations in autonomous commercial mowing with expert analysis and product comparisons.



Stotz

Designed to raise the bar for stand-on mower performance, cut quality and durability, the all-new Vertex delivers productivity landscape professionals can depend on. Compact, maneuverable, and easy to operate, Vertex is the right tool for a wide range of mowing jobs.



Greenworks

Our CZ60R24X OptimusZ 60" 24kWh Ride-On Zero Turn Mower has a built-in 24kWh (65HP) battery with an eight-hour runtime after three hours of charging and is capable of covering over 12 acres. It features a cutting speed of 16mph and is compatible with 4G/GPS connectivity including Fleet Monitoring + Greenshield™ theft protection.



Mean Green

The VANQUISH is the electric stand-on that will vanquish anyone's need for a gas-powered stand-on. Offered in 60" or 52" rear or side discharge deck sizes and power comparable to a large gas stand on, it is the perfect go-to electric commercial mower for everyday use.



Choose between the large 22-kWh battery for all day use or our 14-kWh battery for over a half days work.

Turf Star Western



Introducing the bold new Grand-Stand® Revolution Series commercial mowers. Developed by Toro, industry-leading HyperCell batteries deliver superior power that devours the lushest of lawns all day long without bogging down!

Built on the same proven Grandstand® chassis and TURBO FORCE® deck that you've trusted for years, the new Revolution Series delivers lower overall cost over the machine's lifetime.

Exmark



Exmark Lazer Z zero-turn mowers deliver the commercial durability, comfort, productivity, reliability and low cost of ownership landscape contractors need to maximize profitability and minimize downtime.



Anaheim Lawnmower Shop



The Toro 21" Hydraulic Aerator features a



unique hydraulic drive system that provides excellent maneuverability and ease of use. A wide unibody frame with 10-gauge steel construction and outboard drive wheels give this machine a low center of gravity for excellent side hill stability. It is compact enough to get into the tightest areas and can aerate in reverse to back out.

Stihl

The STIHL iMOW® RMI 632 P is designed to automatically mow your lawn on a consistent basis and in a quiet and efficient manner. It features flexible programming, automatic charging, intelligent hood sensor (allowing the iMOW to work around solid objects), a durable double-sided steel blade, adjustable cutting heights, and more - all powered by a reliable STIHL Lithium-Ion battery. This robotic lawn mower also features smart technology with a mulching mower functionality that returns nutrients and moisture back to the soil for a greener, thicker and healthier lawn.



Oso Electric Equipment

As the world changes, so should your technology. Electric technology brings value to your business, your customers, and your world. Not only is this clean technology environmentally friendly, it adds an unbeatable return on investment compared to gas-powered mowers. All while operating with increased power and durability.



B & M Lawn & Garden

The American-built BR 800 X MAGNUM® is designed for professional landscapers tackling large properties. With a 4.4 bhp engine, the BR 800 X offers 20 percent more power than the BR 700, allowing you to clear leaves, grass, and heavy debris faster and more efficiently.



EGO Commercial



Our 800 CFM Backpack Blower reaches speeds up to 190 mph and 26N push force. This backpack blower features a high-performance 1,900W brushless motor delivering 60CC equivalent. Digital controls include a battery level indicator and speed control. Its commercial-grade construction is built for five times longer life and rated IPX5 for tough conditions.

Alan's Lawnmower

The first battery-powered backpack blower in the STIHL lineup is also its most powerful battery blower yet. With its high-performance brushless motor, the BGA 300 delivers a powerful 26 Newtons blowing force and 192 MPH air speeds for heavy-duty clearing of both dry and wet debris in a virtually maintenance-free package. When paired with the AR 3000 L backpack battery, the BGA 300 delivers up to 140 minutes of performance.



Sunseeker



Our 60V Commercial Hand Blower has an ergonomic handle with a soft grip, stepless speed control, and a quick assembly button. It is light weight, 2.8kgs (6.1lbs),

and well. The 60V features a turbo boost function for high performance that reaches blowing air speeds up to 90m/s(200MPH), and a max air volume of 1400m³/h/830CFM.





Milwaukee

Designed to meet the needs of landscape maintenance professionals, Our M18 FUEL™ 10" Pole Saw with QUIK-LOK™ kit gives you the power to cut hardwood branches, reaches full throttle in under one second, and delivers up to 150 cuts per charge. The cordless pole saw features our POWERSTATE™ Brushless Motor which gives you the power to maintain its speed in demanding applications without bogging down, outperforming higher voltage systems.



Stihl

The STIHL MSA 220 TC-O is the most powerful top-handle chainsaw in the STIHL battery-powered line-up, boasting power and

performance similar to professional gas top-handle chainsaws. By utilizing the same 3/8" STIHL PICCO™ chain and 12" ROLLOMATIC® E and E Light guide bars as its gas-powered counterparts, the MSA 220 TC-O helps pros seamlessly make the switch from gas to battery power. With a high chain speed and durable parts such as a magnesium motor housing and a brushless motor, in-tree professionals can count on this saw to hold up to a heavy workload. An LED display screen provides quick status updates and helps to keep pros moving. Downtime is limited with the MSA 220 TC-O's weather-resistant design, low maintenance, easy service, and replaceable parts. The MSA 220 TC-O provides the power and dependability pros trust from STIHL chainsaws.

Eliet

The Cameleon M is an Eliet innovation, combining a compact lawn vacuum with an optional shredder unit. The machine is ideal for use on larger yards and can be used in virtually any landscaping situation where yard debris requires disposal, such as clearing away leaves, trimming hedges, pruning flowers, and other tasks of similar nature.



Sports Turf Innovations



STI Sports Turf Innovations, a subsidiary of L. Barrios and Associates, Inc. offers equipment rentals for sports field construction and renovations. Contact our office for further details.



Direct Edge

The Eger Beaver 1821 Brush Chipper is ideal for residential tree services, utility line clearing, vegetation management, maintenance contractors and municipalities, this high-capacity, high-production chipper includes more standard features than any other chipper in its class. Many customer-inspired innovations are featured on the Eger Beaver 1821, increasing efficiency and safety while reducing operating and maintenance costs.



Carefree Wheel & Tire



The 15 tonne X Series excavator sits perfectly alongside its highly acclaimed 20 tonne big brother. Our engineering teams have once again obsessed over every minute detail of this new world-class excavator and used the same quality materials and proven components.

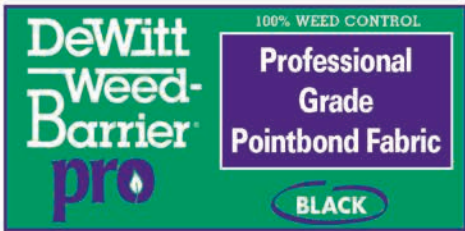




**DeWitt
Contractor Select Plus**
*Tough and Durable
Under Pavers and Gravel*



**DeWitt
Weed Barrier Professional Max**
*Resists Tears & Puncturing
and Stops Weeds*



**DeWitt
Weed Barrier PRO**
*UV and Hydrophilic Treated Fabric
Designed Specifically for Professionals*



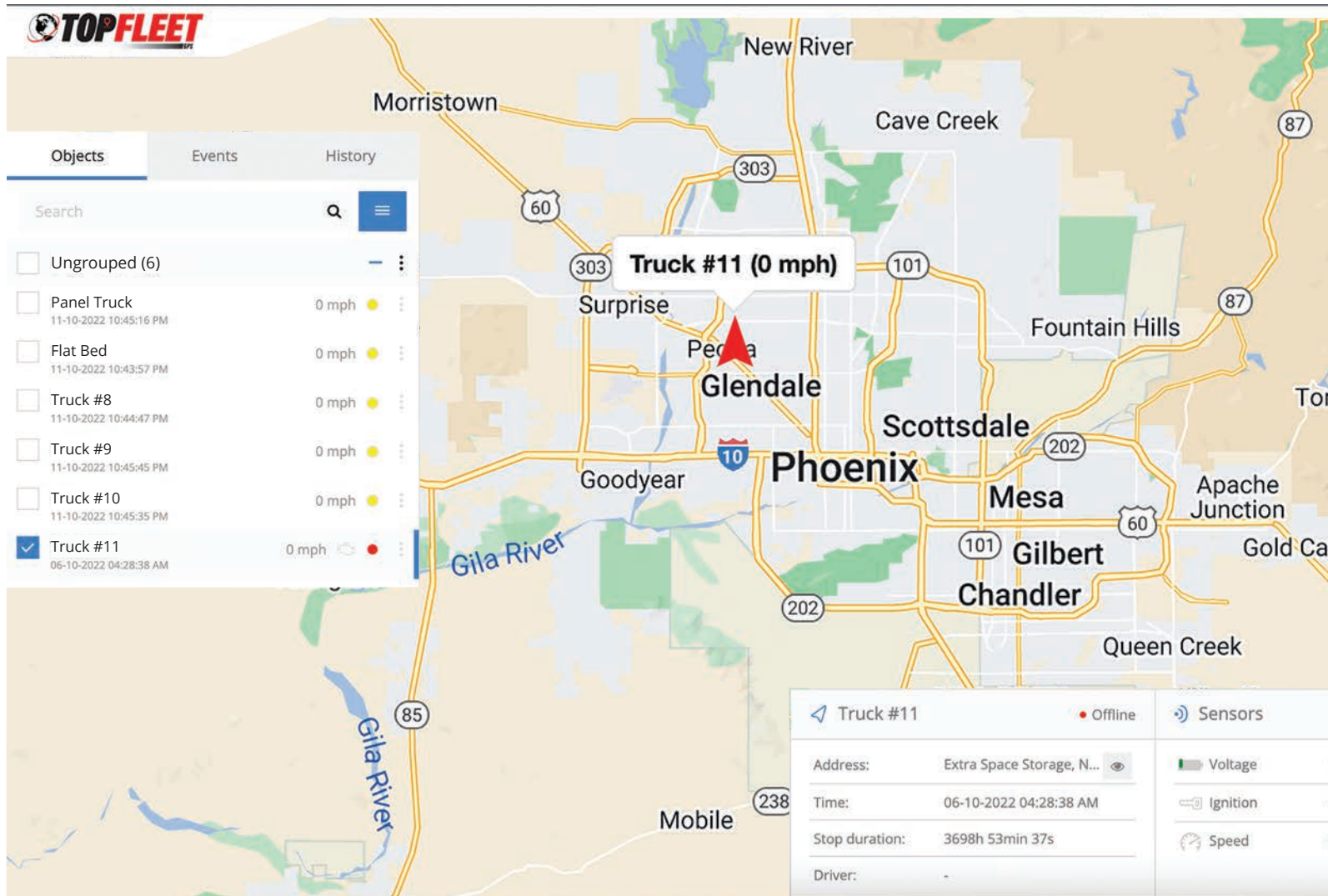
**DeWitt
Filter Fabric**
*Stabilizing Force to Prevent
Unwanted Movement in Hardscapes*



**DeWitt
GeoGrid**
2K, 3K and 5K Series
*Adds Strength and Longevity
to Retaining Walls*



GPS Tracking



In the realm of modern commercial landscaping, efficiency is key. From managing diverse teams to ensuring timely service delivery, the industry demands precision and organization. Enter GPS tracking solutions—a technological marvel revolutionizing the way landscape businesses operate.

GPS tracking solutions, leveraging the Global Positioning System, have emerged as indispensable tools for commercial landscaping companies. These systems utilize satellite technology to pinpoint and monitor the location of vehicles, equipment, and personnel in real time. In the context of the landscaping industry, where teams are constantly on the move, these solutions offer a plethora of advantages.

Top Fleet GPS, a leading solutions provider, notes how enhanced fleet management stands out as a primary benefit. With GPS tracking, customers can monitor their entire fleet

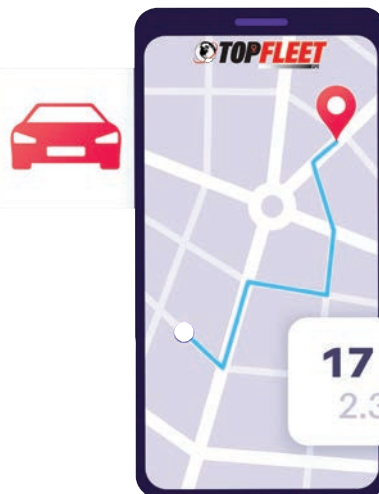
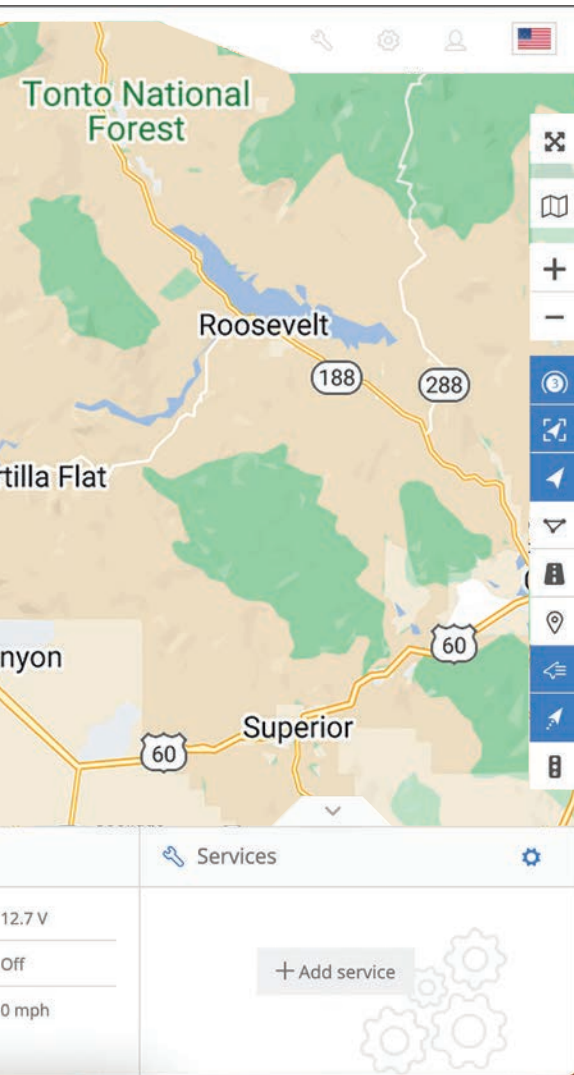
of vehicles, enabling precise route planning and optimization. This not only reduces fuel consumption and operational costs, but also minimizes travel time between job sites, allowing for increased productivity and client satisfaction.

Moreover, the ability to track equipment provides an added layer of security. Landscaping businesses significantly invest in tools and machinery, and GPS tracking solutions offer a means to monitor their whereabouts, thus mitigating the risk of theft or unauthorized use. This feature also aids in scheduling maintenance, ensuring that equipment is serviced promptly which reduces downtime and enhances longevity.

Efficiency and accountability are further heightened by the monitoring of employee activity. As noted by Azteca Landscape, using Top Fleet GPS as their GPS tracking solution enabled them to track the movements and working hours of their workforce,

Solutions

by John Lam,
Top Fleet GPS



The cost for fleet tracking is based on subscription programs starting in the teens, plus set-up fees and equipment for a few hundred dollars or more depending on the size of your fleet. Editor's Note: TopFleet was the only company we found with pricing on their website, the other top google searches required an email, contact capture and put you on a sales list before even discussing costs.

Today	Yesterday	Week	Month
Device events			
GV350MG	2020-08-22 13:19	Hard Braking	▲
GV350MG	2020-08-21 09:31	Hard Braking	▲
GV350MG	2020-08-20 16:10	Overspeed	⚙️
GV350MG	2020-08-20 16:06	Hard Braking	▲
GV350MG	2020-08-20 08:59	Hard Braking	▲
GV350MG	2020-08-20 08:45	Hard Braking	▲

promoting accountability, and optimizing labor allocation. This transparency fosters a culture of responsibility and can lead to improved employee performance and customer service.

Additionally, the integration of GPS tracking with job scheduling and dispatch systems streamlines operations. Landscaping companies can allocate tasks based on proximity, expertise, and availability, maximizing efficiency in job assignment and completion. Real-time updates on job progress also enable better communication with clients, fostering trust and satisfaction.

Beyond operational advantages, embracing GPS tracking solutions aligns with sustainability goals. By optimizing routes and reducing unnecessary mileage, companies can significantly reduce their carbon footprint. Efficient planning and resource allocation not only benefit the bottom line but also contribute positively to the environment—a critical consideration in today's conscientious business landscape.

Furthermore, the data collected through GPS tracking offers valuable insights for informed decision-making. Analyzing historical movement patterns and job durations allows companies to fine-tune their strategies, identifying areas for improvement and optimizing workflows for future projects.

In conclusion, GPS tracking solutions are a game-changer for the commercial landscaping industry. By facilitating efficient fleet management, enhancing security measures, promoting accountability, streamlining operations, supporting sustainability goals, and providing valuable data insights, these systems empower businesses to thrive in a competitive market.

Landscaping companies leveraging GPS tracking solutions gain, not just technological prowess, but also a competitive edge, enabling them to deliver superior services while driving growth and success in the industry. [LC/TLE](#)

The Uncertain Future of Artificial Turf in California

by Brandon Burgess, Chino Basin Water Conservation



Brandon Burgess serves as the Chino Basin Water Conservation District's Conservation Specialist I. He specializes in auditing smart controllers to help individuals reduce water use on residential properties.



Above, Both: California legislation is working to create balanced landscapes that are both environmentally savvy and healthy. AB 1423 would prohibit a public space from installing or purchasing a surface containing PFAS like artificial turf, however, native plantings have been identified as a great alternative to this.

The future of the once praised drought remedy, artificial turf, may have an uncertain future in California as two major events happened in the end of 2023. California Assembly Bill 1423, introduced by Assembly Member Schiavo, aimed to prohibit the installation of artificial turf fields in public entities.

AB 1423:

This bill would prohibit, starting on January 1, 2026, a public entity, commercial property, any public or private school, a public institution of higher education, other than the University of California, or a private institution of higher education from purchasing or installing a covered surface containing regulated PFAS, as defined by the bill.

The assembly bill passed both the California State Senate and the State Assembly in September 2023 but was ultimately vetoed by Governor Gavin Newsom the following month. In a letter to the State Assembly, Newsom, while still strongly supporting the intent of the legislation, explained his decision to veto AB 1423, stating that, "I am concerned that this bill falls short of providing enhanced protection to California consumers due to a lack of regulatory oversight."

But Newsom was not done with addressing the installation of artificial turf. Newsom amended Senate Bill No. 676, a nearly decade-old law that prohibited public entities from banning the installation of synthetic grass or artificial turf on residential

properties. The amendment removed artificial turf and synthetic grass from the prohibited list, allowing public entities to enact a ban on artificial turf installation at the local level.

SB 676:

Existing law prohibits a city, including a charter city, county, and city and county, from enacting or enforcing any ordinance or regulation that prohibits the installation of drought-tolerant landscaping, synthetic grass, or artificial turf on residential property, as specified.

So why is the State of California taking a stance on the installation of artificial turf? The answer lies in the possible connection between artificial turf and PFAS, also called the forever chemicals. According to a statement provided by the State Legislature,

"Perfluoroalkyl and polyfluoroalkyl substances (PFAS) have been linked to scientific, peer-reviewed research to severe health problems, including kidney and liver damage, developmental harm, and immune system disruption." In addition, these PFAS particles can be "emitted as part of the dust as the (artificial turf) fields age and degrade due to use and exposure to the elements," particularly at high temperatures that are commonplace in many areas of California. Artificial turf can become extremely hot in the California summer where temperatures around 100 degrees Fahrenheit are common.

With seemingly one less tool in the conservation toolbox, where does that leave the landscape industry? The good news



Above, Both: After decades of allowing artificial turf, including SB 676 which prohibited public entities from banning the turf alternative, the legislation was removed as the West still grapples irrigation water rights and usage.

is there are still options to combat drought and climate change in our outdoor spaces. One of those options is implementing drought-tolerant and local native plants into our landscapes. Planting drought-tolerant and local native plants in our outdoor spaces offers a wide range of ecological, aesthetic, and conservation benefits. By choosing local native plants you are supporting local biodiversity by providing habitat and food for birds, insects, and pollinators. Drought-tolerant and native plants additionally offer a wide range of colors, textures, and forms, providing an aesthetically pleasing landscape. Many of the drought-tolerant and native landscapes have adapted to California’s hot and dry summers and by doing so require less

water than non-native species once established.

The shift toward implementing drought-tolerant and local native plants emerges as a promising solution. This approach addresses both water conservation and climate change concerns without the potential connection to PFAS exposure, which is the underlying concern of the state. This landscaping approach contributes to biodiversity, supports local wildlife, and creates aesthetically pleasing landscapes while requiring less water than non-native species. As the landscape industry adapts to changing state legislation, it is good to take a step back and remember that building sustainable and resilient outdoor spaces is not only achievable, but also the new standard in California. **LC/TLE**

PAFAS Harmful Impact

Polyfluoroalkyl substances (PFAS), or Forever Chemicals, are long lasting chemicals that break down slowly. This chemical is used because of its resistance to oil, stains, heat, and water. PFAS are used in a variety of products including clothing, food packaging, heat resistant surfaces, electrical wire insulation, and artificial turf.

While the “Forever Chemical” is used in the water saving landscaping, this is a harmful practice as it can move through soil to contaminate drinking water, create algae blooms, and harm the environment. After California banned PFAS, New York legislators are also calling for legislation to control harmful PFAS.

In 2024, the Environmental Protection Agency (EPA) released two proposed regulations under the Resource Conservation and Recovery Act (RCRA) to protect communities from PFAS. The first, released in January 2024, gives three methods to better measure PFAS in the environment. The three methods test

for 40 PFAS in surface and groundwater, soil, biosolids, and fish tissue. Next, the EPA announced the automatic addition of seven PFAS to the list of chemicals cover by the Toxics Release Inventory (TRI). Then, the EPA finalized a rule that prevents companies from starting or resuming the manufacture or processing of 329 PFAS.

Landscape Contractor magazine is following this story as this is an evolving situation across the West.

While California passed the law allowing local governments to ban the turf alternative, both Utah and Arizona are looking at similar bans.

For more on nonfunctional and artificial turf and other legislation, turn to page 14.



The 2-Day Landscape Educational Conference and Trade Show

THE 2024 - A
LAND
 DESIGN • BUILD • MAINT
 SEPTEMBER 18TH - 19TH

*Experience the
 Future of Landscape*

Industry
LANDSCAPE CONTRACTOR
 THE OFFICIAL PUBLICATION OF THE LANDSCAPE INDUSTRY
 W
 4:00



*Spend Quality Time
 With Hundreds of Exhibitors
 Selling Thousands of Products*



**You'll Find
 of Exhibitors, Seminars
 Demonstrations
 Pre-Register Today @T**



ANAHEIM LANDSCAPE MOUNTAIN • SUPPLY EXPO 18TH & 19TH

Travelers . . . Make Your Travel Plans Now

*Early Bird Hotel & Conference Package Rates Now In Effect
All Inclusive 2-Night Packages Starting at Only \$595.00*
Includes 2 nights at the Clarion Anaheim Resort, only steps from the convention center.

Experience The Landscape

Reception
Wednesday
10:00 - 7:00 pm
PGMS
professional grounds
management society



*Learn From An All-Star
Line-Up of Industry Educators
and Association Representatives*



and 3+ Acres
of Seminars, Workshops,
Demonstrations and More
at TheLandscapeExpo.com



Regan Barry, winner of the CLCA Allegiance Award.



CLCA Honors Leaders with Distinguished Awards

The California Landscape Contractors Association (CLCA) held its awards ceremony during the CLCA annual Leadership Conference in San Marcos from January 16-17. The 2023 awards were awarded to the following individuals.

The Allegiance Award recognizes green industry professionals that have been a part of the association for more than 15 years and have made a significant impact on the industry during their tenure. Each Allegiance Award winner has also served on a CLCA committee, task force, or board for at least 10 years. The winner of the Allegiance Award is Regan Barry, founder and owner of Coastal Evergreen in Scotts Valley.

Barry was said to be an outstanding volunteer since he joined the CLCA in 2001, and has served on the Bylaws, Nominations, Membership and Legislation committees as well as the Nor Cal chapter president.

The Regular Member of the Year Award

honors a contractor and member of the CLCA that is involved with a significant project or accomplishment during the current year. The 2023 Member of the Year was awarded to Sal Hernandez, the owner and founder of Pacific Breeze Landscape.

Hernandez currently stands as the CLCA state membership director; he holds a position on the board of directors, and served as the Orange County chapter president in 2021-2022.

The Associate Member of the Year Award went to Gina Stanley, Sacramento Valley chapter president. The Associate Member of the Year Award goes to a member that is involved in a significant project or accomplishment like the Regular Member. Current president of the Sacramento Valley chapter, Stanley also holds role in the CLCA Events Committee.

<https://clca.org/about/distinguished-members-2023/>

Sal Hernandez, winner of the CLCA Regular Member of the Year Award.



Gina Stanley, winner of the CLCA Associate Member of the Year Award.



2024 Legislation Impacting California Contractor's Licensees

Leading into 2024, the California Contractors State License Board (CSLB) issued a notice to contractors throughout the state of the new licensing laws affecting these professionals. The following four bills all took effect on January 1:

SB 630

This bill requires CSLB licensees and applicants to provide an email address, if available, when they obtain and renew licenses. The email addresses are not subject to disclosure under the California Public Records Act. This bill also authorizes the Registrar to automatically reimpose license revocation when prohibitory conditions placed on a license are not met.

AB 336

This bill requires licensees with a workers' compensation policy to provide the top three workers' compensation classification codes on their workers' compensation policy when they renew their licenses. Those codes will be posted on the CSLB license lookup webpage. Licenses won't be renewed without the codes. However, the bill allows for retroactive renewal if the licensee provides the codes within 30 days after receiving notice of the denial.

AB 1204

This bill prohibits specialty contractors from subcontracting with two or more contractors in the same classification on the same jobsite unless the subcontractor has employees who perform the work in the relevant classification or are party to a collective bargaining agreement. This bill makes violations of this section cause for disciplinary action.

SB 601

This bill increases the statute of limitations to three years for misdemeanor violations by a licensed contractor for allowing an unlicensed person to use their contractor license. This bill also requires courts to assess the maximum civil penalty for specified home improvement contract violations in declared disaster areas.

Turf Legislation Across the West

As water becomes more scarce, the west is developing legislation to reduce use.

Colorado proposed bill SB-24005 prohibiting the installation of nonfunctional turf, artificial turf, or invasive plant species in commercial settings and transportation corridors. If passed, it would take effect in January 2025.

Meanwhile, Utah passed a bill, in January, that limits the use of nonfunctional turf for new government construction within the Great Salt Lake Basin. H.B. 11 defined terms and restricts the use of lawn or turf by certain government entities and targets grass used in parking strips, medians, and roundabouts. This legislation added verbiage that limits the amount of grass that is not used for active recreation to a maximum of 20% of the landscaped area of a new site constructed or renovated on or after May 1. The bill has to pass the House and Senate by March 1 before it can be signed into law.

California meanwhile signed AB 626, which was signed into law on Oct. 8 and allows the ban of artificial turf due to PFAS (see page 11 for more information about the Forever Chemical) found in synthetic turf. In 2021, Nevada passed the first bill of its kind, AB 356, that eliminated nonfunctional turf across the state to reduce the impact on the Colorado River.

The prohibition of this type of landscaping is projected to cut 7 billion gallons of water by 2024 according to Southern Nevada Water Authority.





solus

Fire & Water

Water Dome

Solus Decor's Water Features instantly introduce a sense of calm and serenity to any environment.

Choose from a variety of our contemporary concrete water bowl designs for your residential or commercial space.

1-877-255-3146 solusdecor.com
info@solusdecor.com



EPA Refines Pesticide Policies Under the Endangered Species Act

Historically, EPA has faced challenges in fully meeting its obligations under the Endangered Species Act (ESA) as litigation against the Agency has been common due to uncertainty for



The EPA is focusing on updating the species habitat map after receiving blowback for the previously implemented pesticides policies.

farmers, unnecessary expenses, and delays in species protection efforts. In response, EPA released its ESA Workplan in April 2022, outlining strategies to ensure pesticide safety while maintaining access for various stakeholders.

One of the key initiatives under the ESA Workplan is the Vulnerable Species Pilot project, designed to protect species particularly susceptible to pesticide harm. However, feedback highlighted concerns regarding the accuracy of species habitat maps and the broad scope of pesticide mitigations. To address this, EPA announced plans to collaborate with federal partners, including the U.S. Fish and Wildlife Service (FWS) and the U.S. Department of Agriculture (USDA), to develop more refined species habitat maps. Additionally, EPA will host a workshop to facilitate this process and provide guidelines for public involvement in map refinement.

PAPA's Recommendation on Reporting Pesticide Related Incidents

The Pesticide Applicators Professional Association (PAPA) in conjunction with the California Department of Pesticide Regulation (DPR) recently outlined their recommendations on reporting pesticide incidents, illnesses, or concerns.

Their instructions are to report pesticide incidents or concerns by calling 9-1-1 in case of emergencies or contact your County Agricultural Commissioner (CAC) office for non-emergencies. Provide details like location, symptoms, and contact information if necessary. Additionally, employers must ensure safe working conditions and provide training and protective equipment to prevent pesticide and related incidents from occurring.

Symptoms of pesticide exposure include flu-like symptoms, blurred vision, and difficulty breathing. In



case of illness, seek medical help immediately and inform about possible pesticide exposure. Workers exposed to pesticides on the job have the right to medical care covered by workers' compensation.

Housing Construction and Economic Outlook

For the first time in five months there was a builder confidence uptick in the Wells Fargo Housing Market Index (HMI), rising three points to 37 in December 2023. The Builder Confidence index, measures builder perceptions of single-family home sales and expectations. While, builder confidence is considered negative until it hits 50 due to the scale of rating, the National Association of Home Builders (NAHB) reported in December '23 that more builders view the market as “good” as opposed to “poor.”

For historical context, from 1985, when the report started at just under 60, builder confidence was fairly stable until 2007 when it began its decline to the all-time low of 8 on Jan 31, 2009. From there it reached 75, its pre-COVID high on 11/1/20. The index then plummeted to only 30 by April 2020, but skyrocketed back in November '20 to its all-time high of 90.

Home Building

According to the NAHB, regional HMI in the Western US was 25 in December 2022 and has seen little change since. It was 29 in December 2023 but saw an uptick just a month later to 38 in the first month of 2024.

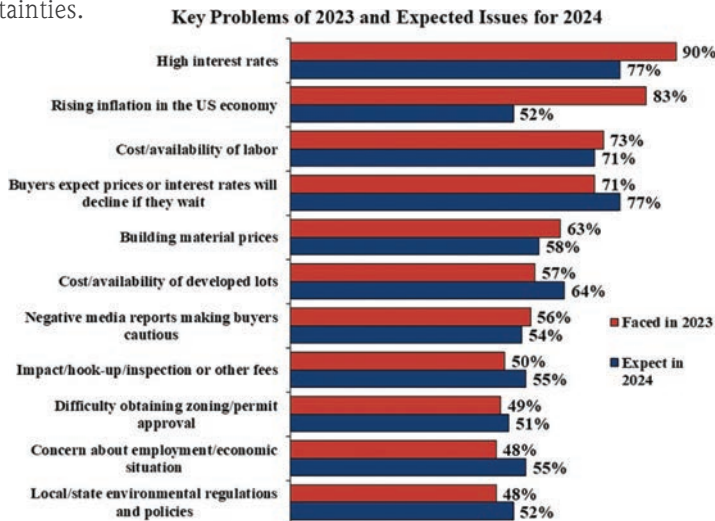
Meanwhile, the gap has narrowed between permits and construction starts from around 500,000 more permits than starts in December '21, to a gap of only 53,700 in 2023. However, construction starts for housing units in '23 were down 9% from 1,552,600 in '22 to only 1,413,100 in 2023.

As such, with so many starts in '22, completions in 2023 were up 4.5% from 1,390,500 in '22 to 1,452,500 units completed in 2023. So, we should expect completion to be down in 2024.

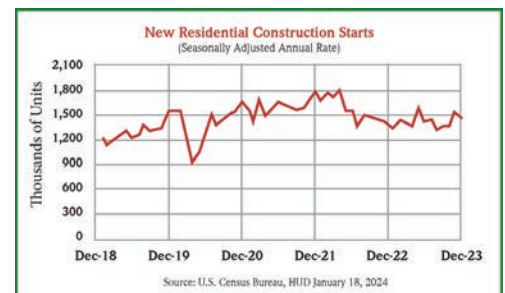
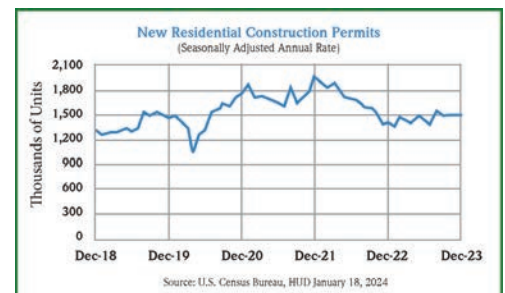
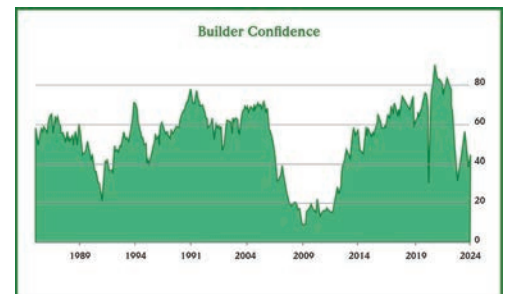
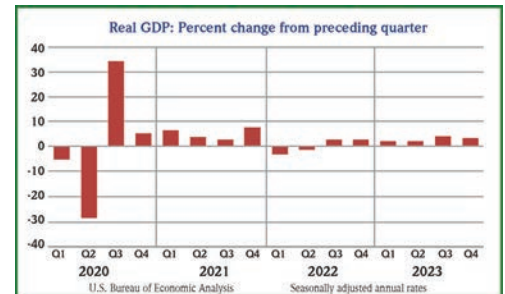
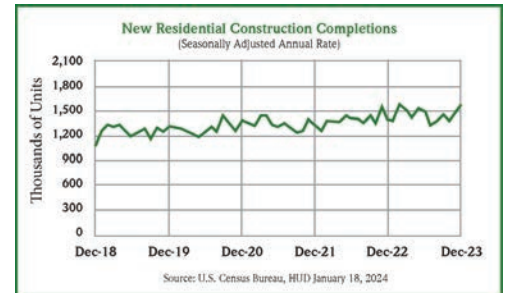
Additionally, residential construction saw a seasonally adjusted annual rate of \$911.7 billion in December, or a 1.4 percent (± 1.3 percent) change over November's estimate of \$898.8 billion. However, according to Statista Research, new residential construction increased across the county from 2019 to 2022 despite the pandemic, yet it is now expected to dip every year through 2025.

Home Builder Key Problems

According to the January 2024 HMI survey, high interest rates were an issue for 90% of builders in 2023 and 77% still expect them to be a problem in 2024. The second problem in 2023 was rising inflation with 83% of builders saying as much. 52% expect the problem to continue in 2024. Next, cost and availability of skilled labor is an increasing problem as 74% listed it in 2023 but 75% believe it will be an issue in 2024. Then, the share of builders experiencing problems with building material prices has fluctuated over the years, reaching as low as 33% in 2011 to a peak of 96% in 2020, 2021, and 2022. Developed lots continue to be an issue and with the upcoming elections, several of the final topics listed reflect those uncertainties.



Source: HMI Special Survey, NAHB EchP.





today's **FORE-cast**
CLEAN EDGES • NO SEDGES
 and a chance of some spare time

SCYTHE
 HERBICIDE

SEDGEHAMMER
 HERBICIDE

Gowan
 USA
 Turf and Ornamental

DAVE BURKHARDT
 928.446.9928
 dburkhardt@gowanco.com

Sedgehammer® and Scythe® are registered trademarks of Gowan Company, L.L.C.
 Always read & follow label directions.



GROWING TO SUPPORT YOU

(866) 522-7225
 www.socaljcb.com

SoCAL JCB

Fontana - 14675 Valley Blvd, Fontana, CA 92335
 La Mirada - 14480 Alondra Blvd, La Mirada, CA 90638

Upcoming Events

CLASS Fund

The California Landscape Architectural Student Scholarship (CLASS) Fund will be hosting their Annual Golf Tournament on July 15, 2024, at the Aliso Viejo Country Club.

CLCA Chapters

The Central Coast Chapter's Board of Directors Meeting will be hosted on March 6th from 12pm to 1:30pm at Seascape Golf Course Restaurant in Aptos. They will meet again on April 3rd from noon to 1:30 at Seascape.

The Sacramento Valley Chapter will meet for the SiteOne

Landscape Supply Kick Off Event on March 6th from 5pm to 7pm at SiteOne in Rancho Cordova for a product demo. They will meet again on March 7th at 9am online for their Board Meeting.

The East Bay Chapter's Board of Directors Meeting will be hosted on March 7th from 11am-12pm via zoom. They will meet again on April 4th from 11am to 12:30pm via zoom.

On March 20th from 11am to 1pm, the Orange County Chapter will meet for OC Lunch & Learn - Artificial Turf at 2120 Ritchey St., Santa Ana. They will meet again on the 26th at 4pm at Concourse Bowling in Anaheim.

Irrigation Association Reports Concerns Over the Corporate Transparency Act

Congress recently passed the Corporate Transparency Act (CTA) of 2019, mandating U.S. companies to report Beneficial Ownership Information to the Financial Crimes Enforcement Network (FinCEN). However, the Irrigation Association (IA) reported that the act's stringent requirements are stirring concerns among small business advocates.

According to the IA, the act casts a wide net, necessitating corporations, LLCs, and similar entities to disclose individuals

who ultimately own or control the business. This mandate, however, presents significant operational challenges, especially with the vague

definition of a "beneficial owner."

Reed Wescott, Director of Federal Policy at the National Small Business Association (NSBA), highlights the complexity, "Since a beneficial owner is not well defined, this could cause companies to either collect and report sensitive information on individuals technically outside the law's scope, or have to fundamentally rethink the way they conduct business."

The NSBA conducted a survey to determine the financial implications of this act. Wescott explained, "The average cost our respondents anticipated in their first year was \$8,000 — more than three times the government's own high estimates. This would amount to a \$5.6 billion annual cost for small businesses."

Additionally, NSBA supports small businesses, employing legal action and federal advocacy to mitigate the Act's impact.



Herbicides and Insecticides



Agri-Turf

LIFELINE® herbicide is a non-selective, post-emergent herbicide that provides broad-spectrum weed control of some of the most challenging weeds, including control of glyphosate-resistant marestail, hairy fleabane, malva, and filaree. Using a unique mode of action, LIFELINE inhibits glutamine production in the weeds which leads to a breakdown in photosynthesis.

control of floating, submerged and marginal aquatic weeds. Reward provides fast burn-down, works in cold weather and rain in as little as 30 minutes. The active ingredient, diquat dibromide, has been used successfully in sensitive aquatic areas for over 25 years.



Wilbur Ellis

EFFICAX enhances your control over early-season weeds by getting more of your pre-emergence herbicide on target, holding it in place longer and ensuring your herbicide investment is more efficient than ever. EFFICAX is labeled for use in agriculture, forestry, golf course, industrial, non-cropland, roadside, turf, and ornamental.

Arborjet

TREE-äge® is a broad-spectrum insecticide for use on Emerald Ash Borer, certain bark beetles, certain caterpillars, coneworm, and more. It has proven in independent studies to have high levels of efficacy and two-year control. TREE-äge® can be used on trees grown in residential and commercial landscapes, golf courses, parks, plantations, seed orchards, and forested sites (private, municipal, state, tribal and national areas).



GroPro

FURIOUS® is an Absolute Botanical based insecticide developed utilizing GroPro's next gen, proprietary technology, AMPx. FURIOUS® provides knockdown and residual control of soft body insects. FURIOUS® is a highly active contact insecticide on egg, nymph, and adult stage soft body insects including thrips, mites, aphids,



Gowan

SedgeHammer® is a selective herbicide for use in controlling nutsedge in turf and landscaped areas, including those with established woody ornamentals. SedgeHammer® may be applied to commercial and residential turf and on other non-crop sites.

Veseris

Reward® Landscape and Aquatic Herbicide provides no-wait control to a variety of aquatic weeds and is ideal for non-selective weed control in turf and landscapes as well as a trim and edge tool. It is a non-selective, highly active herbicide for

mealy bugs, whiteflies, scale, and more. FURIOUS® is a perfect addition to your rotation to support a strong IPM.



Target Specialty Products

Habitat herbicide is an aqueous solution to be mixed with water and a surfactant and applied as a spray solution to control undesirable vegetation growing within specified aquatic sites. **LC/TLE**

To find these products and more, visit TheLandscapeExpo.com and click on "2024 Exhibitors List."

MAKING QUALITY HAND TOOLS FOR 30 YEARS.



Steel & Aluminum Tools
Manufactured in Holland, MI



WWW.WOLVERINEHANDTOOLS.COM

1.800.787.3562

Keeping Up With Pest Control

Keeping up with pest control on your properties and job sites is a never ending challenge. Several OnDemand webinars have been made available through LandscapeWebinars.org, including Good Bugs and Biological Control with Associate Director for Urban and Community IPM, Karey Windbiel-Rojas and Observing, Identifying and Managing Common Tree Pests, by Licensed ISA Certified Arborist, Pesticide Applicator, and ISA Certified Tree Risk Assessor, Kevin Sims of Sims Tree Specialists, who will also be presenting two of the many pest control seminars at the upcoming Landscape Expo, September 18-19 at the Anaheim Convention Center, including speakers from UC ANR, UC IPM, PAPA/Corteva Agriscience, Arborjet Ecologel, and the Association of Compost Producers, along with an all-star lineup of educators presenting 64 seminars at the Two-Day Educational Conference and Trade Show.



Niamh Quinn
UC ANR



Kevin Sims,
Sims Tree Health
Specialists



Karey Windbiel-
Rojas, UC IPM



Wister Dorta,
Arborjet Ecologel



Beatriz Nobua-
Behrmann,
UCANR



Susan Sims,
Sims Tree Health
Specialists



Heidi Burgess,
PAPA /Corteva
Agriscience



Dan Noble,
Assoc. of
Compost Producers

These All-Star Educators will be presenting seminars at the upcoming Landscape Expo-Anaheim.



Outdoor Shade Solutions

For more Outdoor Shade Solutions for Commercial and Residential:
www.shadetreecanopies.com or call: 888-397-3313
 retractable canopies | custom structures | all weather systems | vertical blinds




829 North 400 West
 North Salt Lake, Utah 84054
 Phone: 801.294.4222
 Email: info@asglass.com
 Web: www.asglass.com

All of our colors are green.



Transform your outdoor lifestyle with a Renson pergola for year-round enjoyment



+1 (469) 3819 268
usa@renson.net

Patterned Concrete - Brand Original Since 1972




Offering quality installations for over 40 years
 Specify with confidence, specify by Brand

U.S. 800 252 4619 | CDA 877 728 8266
patternedconcrete.com
MasterSpec
 Powered by Design-Expert
CADdetails

TORONTO | GTA | SOUTHWESTERN ONTARIO | NIAGARA | NOVA SCOTIA | COLORADO | TEXAS | WASHINGTON | OHIO | OKLAHOMA + PROJECTS WORLDWIDE

Graceful Arch & Cross Halving Lattice

Custom Quality Garden Bridges




SAMSGAZEBO.com Hand-crafted in the USA **www.SamsGazebo.com**
 800-376-7267

MIMIC THE LOOK OF NATURAL STONE WITH THE VERSATILITY OF CONCRETE




19215 Redwood Road • Cleveland, OH • 800-321-7628 • www.euclidchemical.com
EUCLID CHEMICAL

The Synthetic Grass Store



The Premier Synthetic Grass Experts
SyntheticGrassStore.com 602-828-4918

One Step SPRAY DECK

DECORATIVE CONCRETE FINISH
 Step 1. Just Add Water!

Easy to Use
 Cost Effective
 Slip Resistant
 Wide Variety of Colors



800. 641.9247 www.sgm.cc
SGM SWIMMING POOL, SPA & DECK FINISHES



Our products don't take an ocean voyage!
 Pet Pick-Ups are easy and inexpensive way to encourage dog owners to pick up after their pet. All Pet Pick-Ups products are **made in the USA!**
 Call for prices, free samples and brochure.
(303) 443-8914
www.petpickups.com

Branch Out with Smarter Irrigation Solutions for Trees

RESIDENTIAL & COMMERCIAL IRRIGATION
 Learn more. Visit hunterindustries.com

For best-in-class solutions to irrigate trees in a range of settings, **download our brochure.**




<https://hunter.info/TreeSolutions>

40 Hunter



**GROUND PROTECTION
STORAGE & TRANSPORTATION**



BENNYSTORAGESYSTEMS.COM | (877) 812-3669 | INFO@BENNYSTORAGESYSTEMS.COM

greenworks
COMMERCIAL
**ZERO EMISSION
LANDSCAPING
EQUIPMENT**

82 VOLT LITHIUM

sure-loc PROFESSIONAL GRADE
LANDSCAPE EDGING
FOR EVERY APPLICATION

MADE IN THE USA

SURELOCEDGING.COM 1.800.787.3562

ANAHEIM Family Owned & Operated Since 1984!
LAWNMOWER SHOP
Some of our Featured Brands

ECHO **Makita** **GREENWORKS** COMMERCIAL
MEANGREEN ELECTRIC MOWERS **TORO** **TUFFARA**

anaheimlawnmowershop.com | (714) 750-9296 | 895 S East St. Unit 104 Anaheim, CA 92805

Soil Moist Water Management Polymers

Full line of water storing polymer and **mycorrhizal** products to meet your planting requirements. Many forms to choose.

- ▶ Reduces plant waterings by 50%
- ▶ Lasts 3-5 years in the soil
- ▶ Reduces plant loss
- ▶ Cost effective

JRM Chemical, Inc.

Soilmoist.com • 800-962-4010 • 216-475-8488

Milwaukee **OUTDOOR POWER EQUIPMENT**

SCAN TO RECEIVE MORE INFO
or visit qr.mke.tl/2agut

Live Earth PRODUCTS

IT'S WHAT'S UNDERNEATH THAT COUNTS

TRY ALL OUR CARBON BALANCED® FERTILIZERS

VISIT US ONLINE AT LIVEARTH.COM

400 S 200 E, EMERY, UT 84522 | (435) 286-2222 | (800) 846-2817

Carefree Wheel & Tire Always The Right Choice

LEADER IN FLAT FREE TIRES FOR OVER 25 YEARS

Wheel & tire applications for:

Lawn Tractors	Yard Trailers
Lawn Mower Decks	Wheelbarrows
Push Mowers	Tote Carts
Riding Mowers	Lawn & Garden Carts
Power Washers	Lawn Sweepers
Stump Grinders	Lawn Tractor Trailers

(800) 774-1113
SALES@CAREFREEWHEELANDTIRE.COM
WWW.CAREFREEWHEELANDTIRE.COM
9155 ARCHIBALD AVE STE 100 BANCHEO CUCAMONGA CA 91710

Ancnoble ANC Technology
Web: www.ancnoble.com
Phone: 1-877-822-3958
Email: sales@ancnoble.com
Wireless Timer System

Connecting PD-12 to "need-to-repair" controller, PD-12 will pick up signals from the "need-to-repair" controller, send signal to field controllers wirelessly.
Repairing with no dig, easy at low cost

915/868 MHz wireless 1000m/0.62 miles
Up to 40 wireless field controllers
Solar or AC powered

915/868 MHz wireless 0.62 miles
Up to 1 wireless flow sensor controller

915/868 MHz wireless
Up to 2 master valves

Wireless distance through relay up to 2.48 miles at line of sight

Hardscapes, Waterfalls, Rocks, GFRC, Epoxy, Overlays, Cement


The CARROUSEL® PUMP and U-Blend Mixer...will do it all!

- * Variable Speed
- * Simple Operation
- * Low Maintenance
- * Pneumatic, 110 and 220
- * Versatile
- * Fast Cleanup
- * Dependable
- * Maneuverable

Electric and Hydraulic Models


Quikspray INC. Box 327 - Port Clinton, OH 43452 419-732-2611 | Leah@quikspray.com www.Quikspray.com

ECO-RAIN TANK SYSTEMS OF AMERICA, INC.




BUILD ECO-RAIN TANKS UNDER LANDSCAPES, SPORTFIELDS, DRIVEWAYS & PARKING LOTS


AASHTO H-25 LOAD RATED – 50,000 LBS. WITH AT LEAST 2 FEET COVER
ICC APPROVED VERIFICATION REPORT
100% RECYCLED POLYPROPYLENE
97% VOID SPACE FOR WATER STORAGE
COMMERCIAL & RESIDENTIAL – MODULAR SIZES



PARKING LOTS



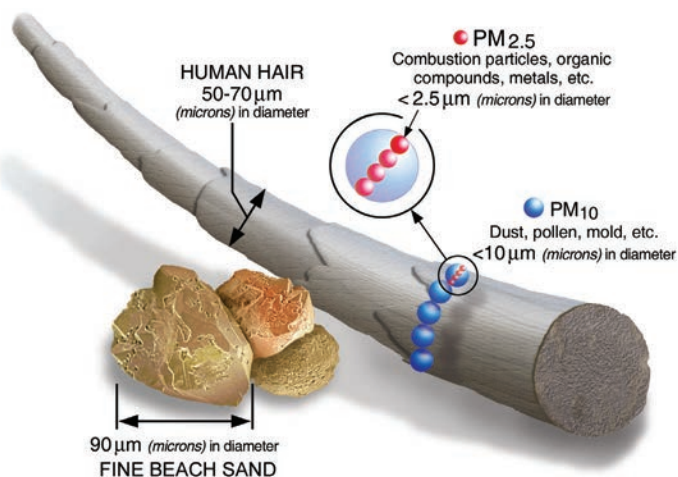
GREEN ROOFS



MUNICIPALITIES

WWW.ECORAIN TANK.COM • CONTACT @ECORAIN TANK.COM • (818) 501-0424

Dusting Away Particulate Matter



Grey4Green, Joseph Gallegos enjoys giving back to communities, and his latest project is quantifying how passion fruit vines can be used to reduce particulate matter 2.5 and 10 (PM2.5 and PM10) pollution in the air around homes and businesses. Particulate matter is small, microscopic dust from car tires, brake pads, and other urban activities. Typically, green landscapes help sequester this particulate matter on leaves that eventually fall to the ground and become part of the soil ecosystem. The issue is that a lot of our landscapes are going dry or being transitioned to native, dry landscapes. With the growing trend in many areas to reduce water use, landscapes are being converted to dry or xeriscapes. An unintended consequence is that dust and contaminants are not being filtered by the landscape and are causing breathing and other health issues, especially to those living or working in areas close to

Left & Right, Both: This EPA graphic shows how small PM2.5 and PM10 really are in comparison to human hair. To find a way to reduce particulate matter using water efficient plant material, Joseph Gallegos of Grey4Green has donated his time and plantings of passion fruit vines to set up a test site to find a way to keep particulate matter at bay. The vines were planted every 10 feet (bottom right) and grew into a solid, particulate capturing barrier (top right).



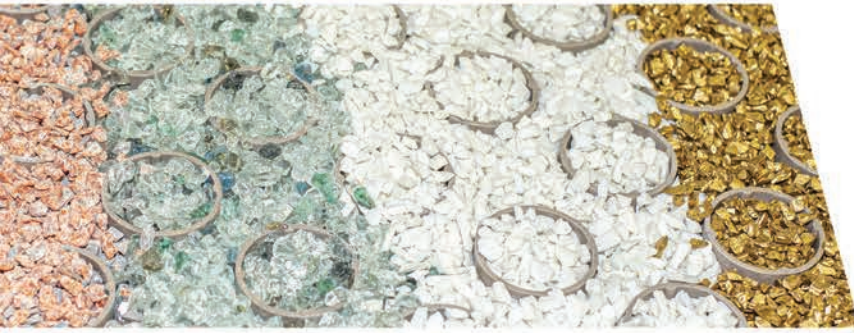
roadways or increased activities.

PM2.5 and PM10 are so small they can pass through blood vessels, and recent research shows there is a correlation to increased risk of dementia and pregnancy complications. Communities that border freeways are especially at risk, so the team and community partners came up with a strategy. If they could quantify how much particulate matter is collected per square yard of passion fruit vines, they then can determine the total green walls needed in an area to reduce overall particulate matter floating around in the atmosphere. The team selected passion fruit vines as the baseline plant, as it supplies a homeowner the benefit of edible fruit while the dense vines help shade the building. Most homes in disadvantaged communities do not use air conditioning because of the high utility cost, so this added shading offers a holistic way to cool homes.

One of the biggest roadblocks of adoption is the cost of water, Grey4Green used their skill set to show homeowners how to use greywater to grow these lush green walls. At the end of the project, Grey4Green will have a baseline measurement they can compare to other vines and plants, and then offer a plant palette homeowners can use around their homes to provide multiple benefits. **LC/TLE**



 **GRASSPAVE²**



 **GRAVELPAVE²**

There Is No Equal



Strength

- The Strongest Porous Pavers Available
- Over 15,940 psi Compression Strength
- Exceeds H25 Loading



Performance

- Performs in Severe Weather Events
- Most Rapid Drainage Available
- Fastest and Easiest to Install
- Lasts a Lifetime



Trusted

- The Best Customer Service
- Over 100 Million sq ft Installed
- America's Favorite Paver Since 1982



 **INVISIBLE**
STRUCTURES™

Invisiblestructures.com/why
(303) 233-8383

Create Dream Backyards

DESIGNED FOR EVERY CUSTOMER
DOWN TO EVERY DETAIL



Bring Paradise to Every Backyard



Scan QR code or visit POOL360.com for all
your Building Material needs.

nptpool.com

